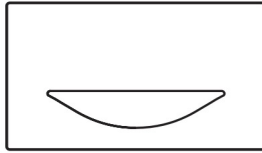


1

Unpack the box



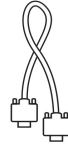
Panel PC



HDMI Cable



VGA Cable



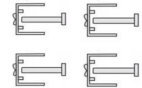
USB Cable for Touchscreen Connection



Power Adapter



Buckle, screws (4sets)



2

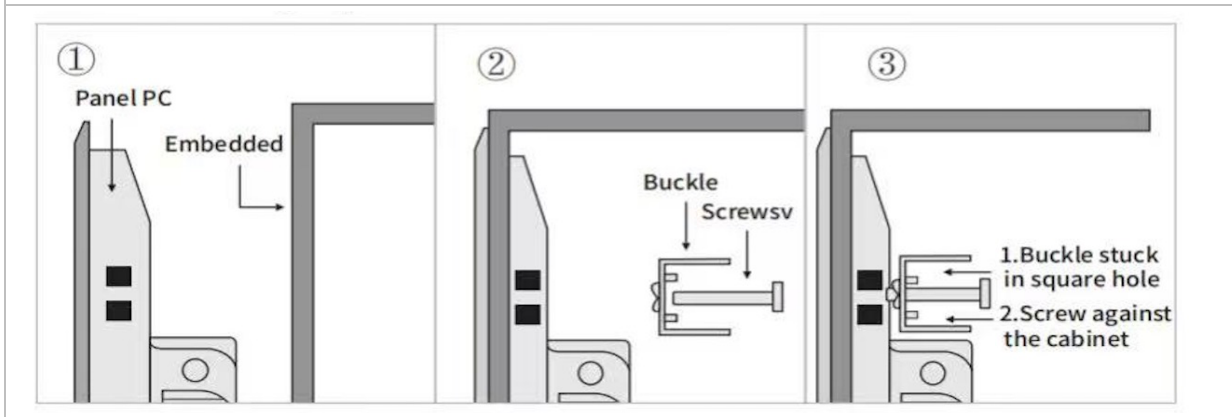
Installations

⚠ Do not place the monitor on an unstable equipment, cart, stand, tripod, bracket, or table. If the monitor falls, it can injure a person and cause serious damage to this product.

Follow the manufacturer's installation instructions when installing the product and use mounting accessories recommended by the manufacturer. A product and cart combination should be moved with care.

(2-1) Embedded Mounting Clamps Installation:

Embedded snap-in installation method: The machine has four snap-in holes to be installed, as shown in the following steps.



(2-2) Desktop Stand Installation:



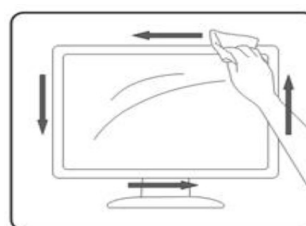
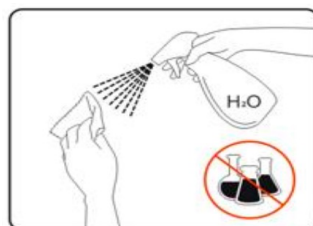
(2-3) VESA Cantilever Installation:



3


Cleaning

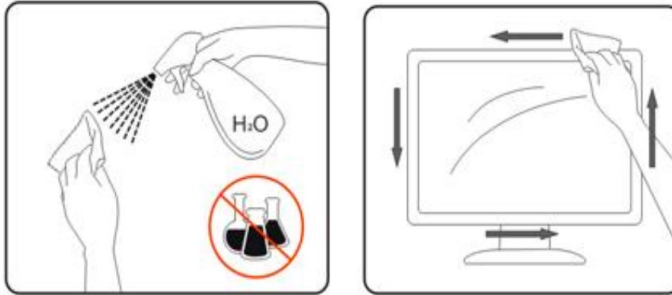
⚠ Clean the monitor regularly with cloth. You can use a soft-detergent to wipe out the stain, instead of strong-detergent which will cauterize the product cabinet.



3

Cleaning

 Clean the monitor regularly with cloth. You can use a soft-detergent to wipe out the stain, instead of strong-detergent which will cauterize the product cabinet.



Troubleshoot

This section provides tips for correcting problems, should any occur. It also describes how to contact Vincanwo Group should you encounter problems that you cannot resolve. Before you contact Vincanwo Group service center, please read the troubleshooting advice in this Installation Instruction. You may also want to consult with your system administrator or company technical support staff.

When troubleshooting a monitor, key steps include: checking for physical damage, inspecting cable connections, verifying power source, testing with a different computer, updating graphics drivers, adjusting display settings, and checking for loose connections at the monitor and computer end of the cable.

Common troubleshooting steps for a monitor:

Check for physical damage:

Look for any visible damage to the monitor screen or cables, as this can cause display issues.

Examine cable connections:

Ensure the power cable is securely plugged into both the monitor and wall outlet, and check that the display cable is firmly connected at both ends.

Try a different cable:

If possible, test with a different display cable to see if the problem lies with the cable itself.

Test with another computer:

Connect the monitor to a different computer to determine if the issue is with the monitor or the computer's graphics card.

Check power source:

Make sure the wall outlet is working properly and try plugging the monitor into a different outlet.

Update graphics drivers:

Outdated graphics drivers can lead to display problems, so update them through your computer's device manager.

Adjust monitor settings:

Check the monitor's on-screen menu to adjust brightness, contrast, and color settings.

Check for display settings in OS:

Verify that the display settings on your operating system are configured correctly.

Disable fast startup:

In some cases, disabling fast startup on your computer can resolve monitor issues.

Potential monitor problems and how to address them:

- **Blank screen:** Check cable connections, power source, and monitor settings.
- **Flickering screen:** May indicate a failing backlight or loose cable connection.
- **Distorted image:** Check display settings on the monitor and computer, or potentially a faulty cable.
- **Stuck pixels:** If a single pixel remains stuck on the screen, it might be a hardware issue.
- **No color or incorrect colors:** Adjust color settings on the monitor and check for outdated graphics drivers.